

# NEW PRODUCTS 2011



Preliminary specifications on unreleased products



## Distributed Design Series Ceiling Loudspeakers

Community's Distributed Design Series is a family of seven, high-performance ceiling loudspeakers ranging from a 4.5", low-profile model, designed for restricted ceiling space, to a 10" subwoofer that complements any of the full-range models in musical applications.

Each of these models is a high-performance loudspeaker. In particular, Distributed Design Series loudspeakers have very high sensitivity and smooth, wide dispersion along with great musical sound quality and excellent voice intelligibility.

<b>D4LP</b>	4.5" (only 3.6" deep) 60W, Sensitivity 92 dB SPL
<b>D4</b>	4.5", 60W, Sensitivity 91 dB SPL
<b>D5</b>	5", 100W, Sensitivity 93 dB SPL
<b>D6</b>	6.5", 100W, Sensitivity 94 dB SPL
<b>D8</b>	8", 150W, Sensitivity 95 dB SPL
<b>D10</b>	10", 200W, Sensitivity 98 dB SPL
<b>D10SUB</b>	10" Sub, 200W, Sensitivity 93 dB SPL

*Sensitivity rated at 1W/1m @ nominal 8 ohm*

- True Coaxial Loudspeakers with Tru-Phase™ waveguide
- High sensitivity for reduced amplifier power requirements
- Consistent, wide dispersion minimizes hot spots and dead spots
- Shares drivers and voicing with Surface-Mount and Pendant models
- Front-Accessible adjustable autoformer power tap switch for selectable 8 ohm or 70V/100V operation
- Labor Saving Drop-Stop and Twist Assist™ installation features
- Separate back cans and faces for new construction
- D6 available in black finish
- Speaker ETL listed to UL1480 and UL2043 standards



## Distributed Design Series Surface Mount Loudspeakers

Community's new Distributed Design Series surface-mount loudspeakers are low-profile, compact loudspeakers with great musical sound quality and excellent intelligibility. The 8-inch DS8SUB subwoofer complements the 5-inch DS5 and 8-inch DS8 full-range models with extended low frequency performance for musical applications.

<b>DS5</b>	5", 100W, Sensitivity 94 dB SPL
<b>DS8</b>	8", 150W, Sensitivity 96 dB SPL
<b>DS8SUB</b>	8", 200W, Sensitivity 88 dB SPL

*Sensitivity rated at 1W/1m @ nominal 8 ohm*

- True Coaxial Loudspeakers with Tru-Phase™ waveguide
- Same voicing as the Distributed Design Series Ceiling and Pendant loudspeakers
- Paintable enclosure constructed of high impact ABS plastic
- Front-Accessible adjustable autoformer power tap switch for selectable 8 ohm or 70V/100V operation
- Infin-A-Ball low profile mounting bracket included
- Designed to Mil Spec 810
- IP55 rated loudspeakers, IP56 rated connector cover



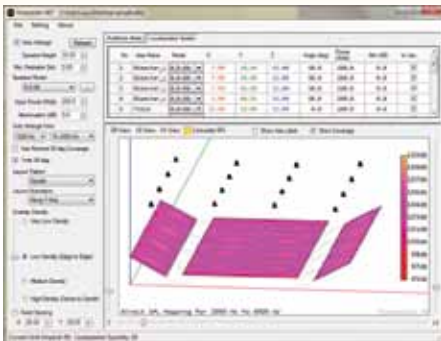
## Pendant Loudspeakers

As part of its Distributed Design Series and Commercial Design Series coaxial loudspeaker families, Community now offers two attractive and high-performance pendant loudspeaker models for open ceiling distributed systems.

The 100W DP6 is part of the Distributed Design Series family. The 60W CP6 is part of the Commercial Design Series family. Both use the same coaxial transducers as their ceiling loudspeaker cousin and provide the same high performance and smooth sound quality and voicing.

**DP6** 6.5", 100W  
**CP6** 6.5", 60W

- True Coaxial Loudspeakers with Tru-Phase™ waveguide
- Components and voicing shared with Distributed Design Series (D6) and Commercial Design Series (C6)
- Paintable enclosure constructed of high impact ABS plastic
- Front-accessible power tap switch for selectable 8 ohm or 70V/100V operation
- Quick, easy to use Gripple™ hanging hardware
- Available in black and white finish
- Speaker ETL Listed to ULI480 specifications and CSA60065
- Suspension system and Gripple Fastener listed per ULI598 and UL2239, TUV and CSA Class 3426-01 and Class 3426-81



## Commercial Design Series Ceiling Loudspeakers

Community's Commercial Design Series is a family of four ceiling loudspeakers including a 4.5", low-profile model, designed for restricted ceiling space, and 4.5", 6.5" and 8" models in standard size back cans. Featuring true coaxial drivers for wide, smooth dispersion and high sensitivity, Community's Commercial Design Series is a competitively-priced alternative that enables designers to provide a quality ceiling loudspeaker system in budget-sensitive projects.

**C4LP** 4.5" (only 3.6" deep)  
 60W, Sensitivity 93 dB SPL  
**C4** 4.5", 60W, Sensitivity 92 dB SPL  
**C6** 6.5", 60W, Sensitivity 92 dB SPL  
**C8** 8", 60W, Sensitivity 92 dB SPL  
*Sensitivity rated at 1W/1m @ nominal 8 ohm*

- True Coaxial Loudspeakers with Tru-Phase™ waveguide
- High sensitivity for reduced amplifier power requirements
- Consistent, wide dispersion minimizes hot spots and dead spots
- Shares drivers and voicing with Pendant models
- Front-Accessible adjustable autoformer power tap switch for selectable 8 ohm or 70V/100V operation
- Labor saving Drop-Stop installation feature
- C6 available in black finish
- Speaker ETL listed to ULI480 and UL2043 standards and CSA60065

## FORECASTER HD Software

Designers can download Community's free Forecaster HD software, an advanced 3D graphical application that helps lay out ceiling distributed systems and predicts coverage even in rooms with sloped floors or seating areas. Visit [www.communitypro.com](http://www.communitypro.com).

## VLF Series: Versatile, High-Performance Subwoofers

Designed to complement Community's front-of-house loudspeaker systems, the new VLF208LV, VLF115, VLF118 and VLF218 are high-performance subwoofers for high power handling and great sound quality. Configure-to-order options include custom color and portable versions (some options not available on VLF208LV).

<b>VLF208LV</b>	Low-Profile Dual 8", 750W PGM
<b>VLF115</b>	Single 15", 1500W PGM
<b>VLF118</b>	Single 18", 2000W PGM
<b>VLF218</b>	Dual 18", 4000W PGM

- Four versatile models to complement any Community front-of-house loudspeaker
- Configure-to-order options include custom color



## M-CLASS Stage Monitors

Community's premium M12 stage monitor is a recipient of the ProSound Web/Live Sound Readers' Choice Award for "Best Stage Monitor." Our new MX8 and MX10 monitors bring that legacy to worship stages, rental and staging events and small to mid-sized music performances.

The 8-inch MX8 and 10-inch MX10 are compact, high-performance monitors using Community's proprietary coaxial drivers with Tru-Phase™ waveguides. Smooth musical sound quality and high intelligibility make these new monitors a perfect complement to any of Community's Front-of-House systems including ENTASYS, VERIS, iBOX and Solutions Series.

<b>MX8</b>	Single 8", 375W PGM
<b>MX10</b>	Single 10", 500W PGM

- Uniform, wide dispersion for even coverage and reduced feedback
- Low distortion, high sensitivity and high power handling for great sound quality
- Attractive, low-profile enclosure minimizes visual impact
- Ergo-Grip™ rear pocket handle
- Optional yoke brackets for flush and corner-mount permanent installation



## dSPEC: Networked DSP Loudspeaker Management

dSPEC (digital Speaker Protection Enhancement & Control) is a simple yet highly versatile loudspeaker management DSP product from Community. In combination with Community's Resyn software, a single dSPEC can manage a simple loudspeaker system or multiple, networked dSPECs can manage a complex facility-wide system. dSPEC features include matrix channel routing, multiple EQ filters, crossover, delay and advanced, multi-level limiting with amplifier integration, along with CONEQ™ acoustic power response compensation using 1000-point FIR filters on each channel. dSPEC's proprietary loudspeaker protection system helps prevent loudspeaker failure due to amplifier overpowering. Community's Effortless Ethernet makes setup as easy as USB plug-and-play. Options include remote volume control and external preset switching.

<b>dSPEC226</b>	2 analog inputs, 6 outputs
<b>dSPEC226AN</b>	4 analog inputs, 6 outputs
<b>dSPEC226AE</b>	AES3 Digital Inputs
<b>dSPEC226CO</b>	CobraNET Digital Inputs/Outputs

- Networked DSP loudspeaker management system
- Simple yet versatile fixed architecture design with matrix input/output routing
- DSP features include EQ, crossover, delay and limiting
- Effortless Ethernet makes network setup as easy as USB plug-and-play
- CONEQ™ acoustic power response compensation using FIR filters
- Versatile amplifier calibration and loudspeaker protection feature
- Expansion card enables models with additional analog inputs, AES3 inputs, CobraNet™ input/output and future network audio input/output options
- Remote volume and preset selection options

## Resyn Loudspeaker Management Software with Effortless Ethernet

Community's Resyn software configures and manages multiple dSPEC DSP systems over an Ethernet network. Resyn's Effortless Ethernet greatly simplifies the task of network setup. Resyn's engineered workflow walks the user through the process of selecting loudspeaker types and models, labeling inputs and outputs, setting protection levels, establishing system EQ, delay and limiting, configuring user presets, and creating access passwords. Resyn software can be downloaded at no charge from [www.communitypro.com/dspec](http://www.communitypro.com/dspec).



Community Professional Loudspeakers  
333 East Fifth Street, Chester, PA 19013-4511 USA

Phone (610) 876-3400 | Fax (610) 874-0190

[info@communitypro.com](mailto:info@communitypro.com)

[www.communitypro.com](http://www.communitypro.com)